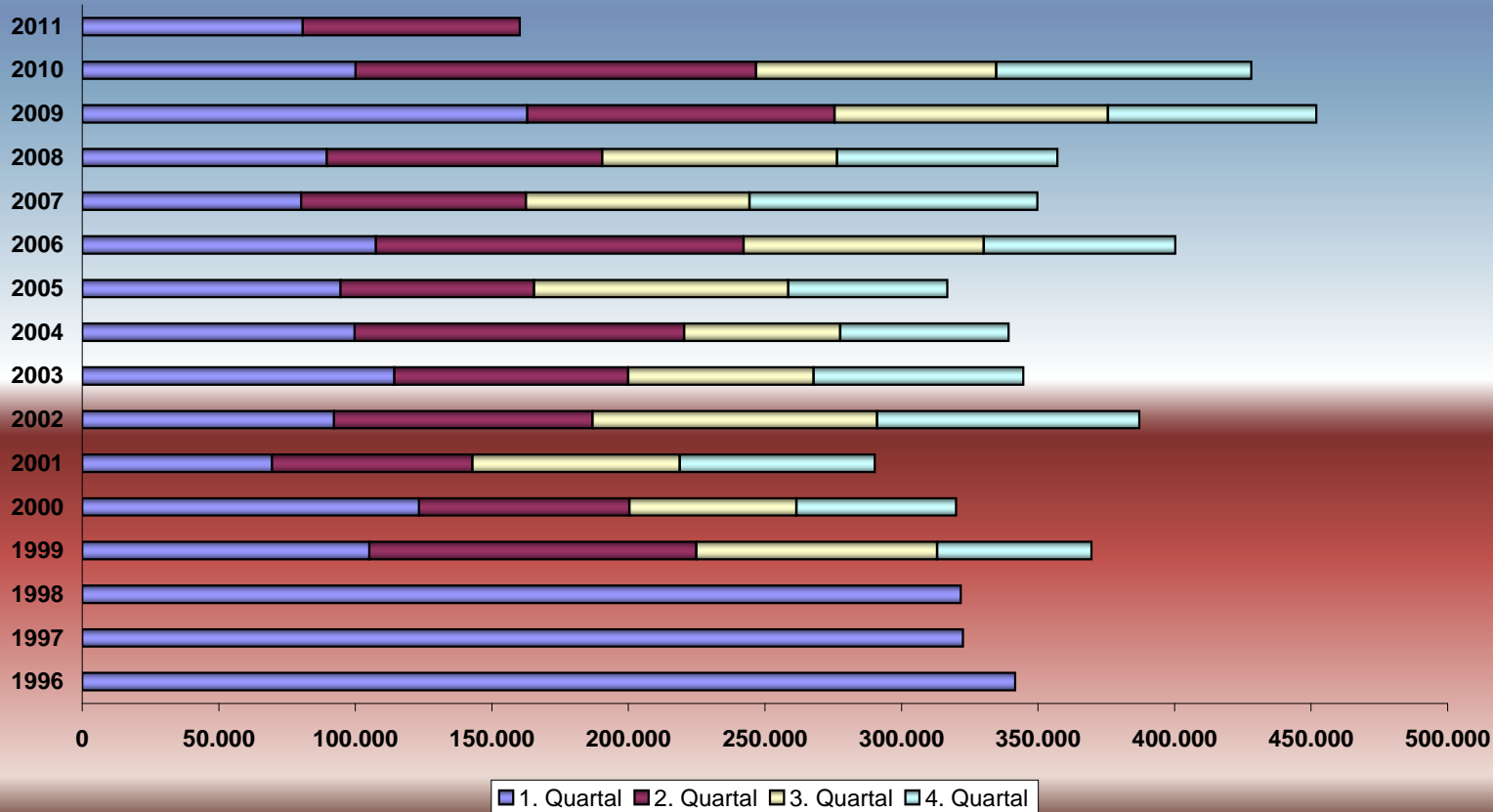


## Kanal Abwassermengen



	1. Quartal	2. Quartal	3. Quartal	4. Quartal	Gesamt m <sup>3</sup>	Wasserbezug
1996	341.664				341.664	
1997	322.490				322.490	
1998	321.677				321.677	
1999	105.150	119.808	88.157	56.572	369.687	
2000	123.354	77.043	61.119	58.522	320.038	
2001	69.480	73.459	75.879	71.490	290.308	
2002	92.210	94.675	104.273	96.093	387.251	250.328
2003	114.310	85.700	67.847	76.851	344.708	295.675
2004	99.789	120.706	57.055	61.778	339.328	258.000
2005	94.636	70.901	93.061	58.322	316.920	
2006	107.589	134.660	87.927	70.218	400.394	279.000
2007	80.215	82.236	81.906	105.489	349.846	
2008	89.596	100.883	86.028	80.731	357.238	
2009	162.964	112.525	100.175	76.389	452.053	
2010	100.090	146.759	87.847	93.476	428.172	
2011	80.715	79.579			160.294	
Fläche	2006 = 261.642m <sup>2</sup>					
Mauerbach	4.000 Einw.	6 Monate	162.451	pro Kopf=	40.6 m <sup>3</sup>	
Purkersdorf	10.000 Einw.	6 Monate	192.602	pro Kopf=	19.3 m <sup>3</sup>	

Abwasserpreis nach Wien alt = € 1.32 neu = € 1.69 Diff. = € 0.37